

**CBT1 / SDHD Antibody (Internal)**  
**Rabbit Polyclonal Antibody**  
**Catalog # ALS15622****Specification**

---

**CBT1 / SDHD Antibody (Internal) - Product Information**

|                   |  |
|-------------------|--|
| Application       | WB, IHC-P, IF, ICC                                   |
| Primary Accession | <a href="#">O14521</a>                               |
| Reactivity        | Human  |
| Host              | Rabbit   |
| Clonality         | Polyclonal   |
| Calculated MW     | 17kDa KDa  |
| Dilution          | WB~~1:1000<br>IHC-P~~N/A<br>IF~~1:50~200<br>ICC~~N/A |

**CBT1 / SDHD Antibody (Internal) - Additional Information****Gene ID** 6392**Other Names**

Succinate dehydrogenase [ubiquinone] cytochrome b small subunit, mitochondrial, CybS, CII-4, QPs3, Succinate dehydrogenase complex subunit D, Succinate-ubiquinone oxidoreductase cytochrome b small subunit, Succinate-ubiquinone reductase membrane anchor subunit, SDHD, SDH4

**Target/Specificity**

Human SDHD. At least three isoforms of THBS are known to exist; this antibody will detect all three.

**Reconstitution & Storage**

Store at -20°C. Aliquot to avoid freeze/thaw cycles.

**Precautions**

CBT1 / SDHD Antibody (Internal) is for research use only and not for use in diagnostic or therapeutic procedures.

**CBT1 / SDHD Antibody (Internal) - Protein Information****Name** SDHD**Synonyms** SDH4**Function**

Membrane-anchoring subunit of succinate dehydrogenase (SDH) that is involved in complex II of the mitochondrial electron transport chain and is responsible for transferring electrons from succinate to ubiquinone (coenzyme Q) (PubMed:<a

[10482792](http://www.uniprot.org/citations/10482792), PubMed: [9533030](http://www.uniprot.org/citations/9533030)). SDH also oxidizes malate to the non-canonical enol form of oxaloacetate, enol- oxaloacetate (By similarity). Enol-oxaloacetate, which is a potent inhibitor of the succinate dehydrogenase activity, is further isomerized into keto-oxaloacetate (By similarity).

#### Cellular Location

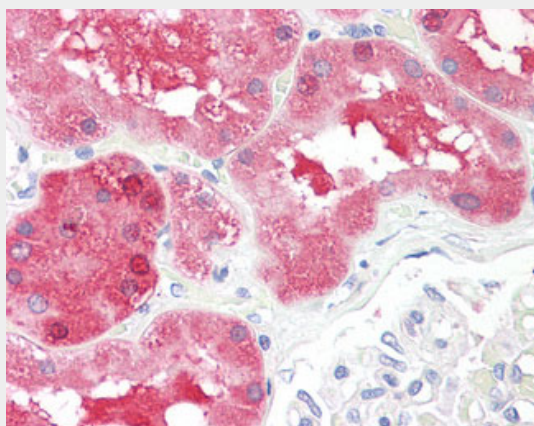
Mitochondrion inner membrane; Multi-pass membrane protein

#### CBT1 / SDHD Antibody (Internal) - Protocols

Provided below are standard protocols that you may find useful for product applications.

- [Western Blot](#)
- [Blocking Peptides](#)
- [Dot Blot](#)
- [Immunohistochemistry](#)
- [Immunofluorescence](#)
- [Immunoprecipitation](#)
- [Flow Cytometry](#)
- [Cell Culture](#)

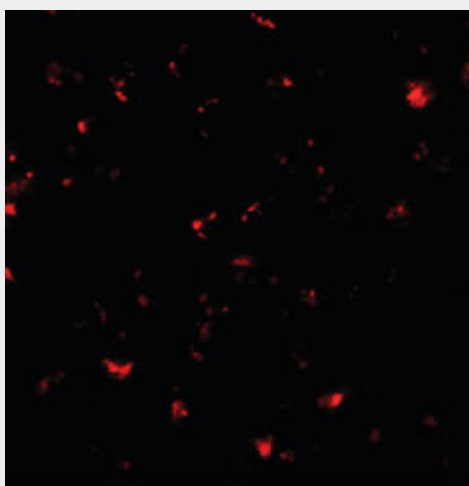
#### CBT1 / SDHD Antibody (Internal) - Images



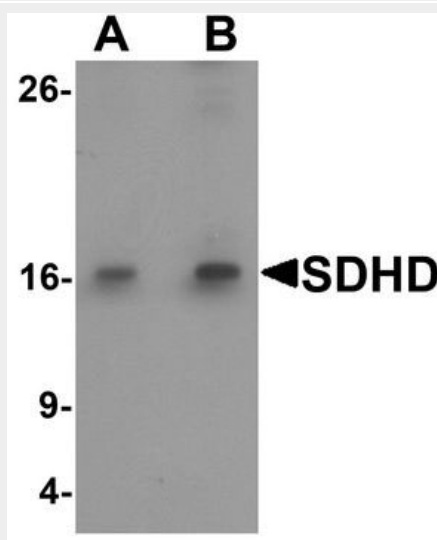
Anti-CBT1 / SDHD antibody IHC staining of human kidney.



Immunocytochemistry of SDHD in EL4 cells with SDHD antibody at 2.5 ug/ml.



Immunofluorescence of SDHD in EL4 cells with SDHD antibody at 20 ug/ml.



Western blot analysis of SDHD in EL4 cell lysate with SDHD antibody at (A) 1 and (B) 2 ug/ml.

#### CBT1 / SDHD Antibody (Internal) - Background

Membrane-anchoring subunit of succinate dehydrogenase (SDH) that is involved in complex II of the mitochondrial electron transport chain and is responsible for transferring electrons from succinate to ubiquinone (coenzyme Q).

#### CBT1 / SDHD Antibody (Internal) - References

- Hirawake H.,et al.Cytogenet. Cell Genet. 79:132-138(1997).
- Hirawake H.,et al.Biochim. Biophys. Acta 1412:295-300(1999).
- Otsuki T.,et al.DNA Res. 12:117-126(2005).
- Kalnine N.,et al.Submitted (MAY-2003) to the EMBL/GenBank/DDBJ databases.
- Ebert L.,et al.Submitted (JUN-2004) to the EMBL/GenBank/DDBJ databases.